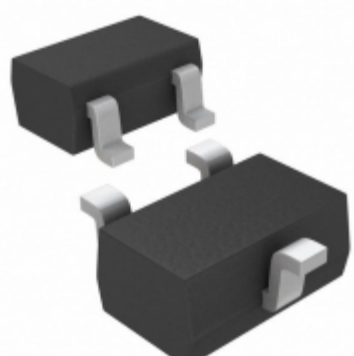


MAX6376XR29+T



Images are for reference only.
See Product Specifications for product details.
Buy MAX6376XR29+T with confidence from
Component-World.HK, 1 Year Warranty



Part Number: [MAX6376XR29+T](#)
Manufacturer: [Maxim Integrated](#)
Description: IC VOLT DETECT LP 2.93V SC70-3
Data sheet: [MAX6375-80](#)
[Part Numbering System](#)

RoHS Status: Lead free / RoHS Compliant
Ship From: Hong Kong
Shipment Way: DHL/Fedex/TNT/UPS/EMS

[Request For Quotation](#)

PRODUCT PARAMETER

Part Number	MAX6376XR29+T	Manufacturer	Maxim Integrated
Description	IC VOLT DETECT LP 2.93V SC70-3	Lead Free Status / RoHS Status	Lead free / RoHS Compliant
Quantity Available	72074 pcs	Data sheet	MAX6375-80 Part Numbering System
Category	Integrated Circuits (ICs)	Voltage - Threshold	2.93V
Type	Simple Reset/Power-On Reset	Supplier Device Package	SC-70-3
Series	-	Reset Timeout	20 μ s Typical Propagation Delay
Reset	Active High	Packaging	Tape & Reel (TR)
Package / Case	SC-70, SOT-323	Output	Push-Pull, Totem Pole
Other Names	MAX6376XR29+T-ND MAX6376XR29+TTR	Operating Temperature	-40°C ~ 85°C (TA)
Number of Voltages Monitored	1	Mounting Type	Surface Mount
Moisture Sensitivity Level (MSL)	1 (Unlimited)	Manufacturer Standard Lead Time	6 Weeks
Lead Free Status / RoHS Status	Lead free / RoHS Compliant	Detailed Description	Supervisor Push-Pull, Totem Pole 1 Channel SC-70-3
Base Part Number	MAX6376		

Component-World.com is a Reliable Stocking Distributor of Electronic Components. We specialize in all Maxim Integrated series electronic components. We have 72074 pieces of Maxim Integrated MAX6376XR29+T in stock available now. Request a quote from electronics components distributor at Component-World.com, our sales team will contact you within 24 hours.

RFQ Email: info@Components-World.com

RELATED PRODUCTS

	Part#: MAX6376XR23-T Description: IC VOLT DETECTOR LP 2.30V SC70-3	Manufacturers: Maxim Integrated	RFQ
	Part#: MAX6376XR26-T Description: IC VOLT DETECTOR LP 2.63V SC70-3	Manufacturers: Maxim Integrated	RFQ
	Part#: MAX6376XR30-T Description: IC VOLT DETECTOR LP 3.00V SC70-3	Manufacturers: Maxim Integrated	RFQ
	Part#: MAX6376XR27-T Description: IC VOLT DETECTOR LP 2.70V SC70-3	Manufacturers: Maxim Integrated	RFQ
	Part#: MAX6376XR24-T Description: IC VOLT DETECTOR LP 2.40V SC70-3	Manufacturers: Maxim Integrated	RFQ
	Part#: MAX6377UR22+T Description: IC VOLT DETECT LP 2.20V SOT23-3	Manufacturers: Maxim Integrated	RFQ
	Part#: MAX6376XR25-T Description: IC VOLT DETECTOR LP 2.50V SC70-3	Manufacturers: Maxim Integrated	RFQ
	Part#: MAX6377UR26+T Description: IC VOLT DETECT LP 2.63V SOT23-3	Manufacturers: Maxim Integrated	RFQ
	Part#: MAX6376XR23+T Description: IC VOLT DETECT LP 2.32V SC70-3	Manufacturers: Maxim Integrated	RFQ
	Part#: MAX6376XR26+T Description: IC VOLT DETECT LP 2.63V SC70-3	Manufacturers: Maxim Integrated	RFQ
	Part#: MAX6376XR31+T Description: IC VOLT DETECT LP 3.08V SC70-3	Manufacturers: Maxim Integrated	RFQ
	Part#: MAX6376XR29-T Description: IC VOLT DETECTOR LP 2.93V SC70-3	Manufacturers: Maxim Integrated	RFQ
	Part#: MAX6377UR25+T Description: IC VOLT DETECT LP 2.50V SOT23-3	Manufacturers: Maxim Integrated	RFQ
	Part#: MAX6376XR28-T Description: IC VOLT DETECTOR LP 2.80V SC70-3	Manufacturers: Maxim Integrated	RFQ
	Part#: MAX6376XR31-T Description: IC VOLT DETECTOR LP 3.08V SC70-3	Manufacturers: Maxim Integrated	RFQ
	Part#: MAX6376XR22-T Description: IC VOLT DETECTOR LP 2.20V SC70-3	Manufacturers: Maxim Integrated	RFQ
	Part#: MAX6376XR28+T Description: IC VOLT DETECT LP 2.80V SC70-3	Manufacturers: Maxim Integrated	RFQ
	Part#: MAX6376XR31+ Description: IC VOLTAGE DETECTOR	Manufacturers: Maxim Integrated	RFQ
	Part#: MAX6376XR30+T Description: IC VOLT DETECT LP 3.00V SC70-3	Manufacturers: Maxim Integrated	RFQ
	Part#: MAX6377UR23+T Description: IC VOLT DETECT LP 2.32V SOT23-3	Manufacturers: Maxim Integrated	RFQ

Related keywords for **MAX6376XR29+T**

Maxim Integrated MAX6376XR29+T	MAX6376XR29+T distributor	MAX6376XR29+T supplier	MAX6376XR29+T price
MAX6376XR29+T download datasheet	MAX6376XR29+T datasheet	MAX6376XR29+T stock	buy MAX6376XR29+T
Maxim Integrated MAX6376XR29+T			